

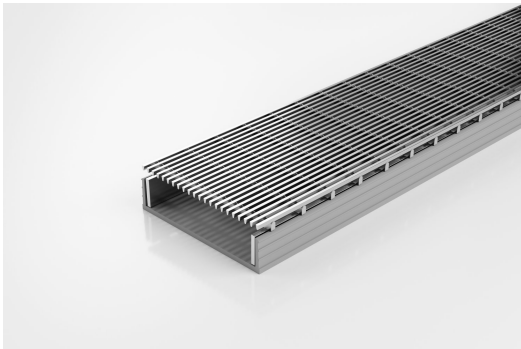


ARCHITECTURAL  
GRATES + DRAINS



# 100ARG30

## Linear Drain



Modular site finish system, wedge wire grate, manufactured from 316 grade stainless steel combined with a UPVC channel.

The 100AR is the original premium architectural grate featuring a 2mm wire/2.5mm gap.

Kits longer than 3000mm are available on request.

Please be aware that depending on the installation environment, for a pool installation or close to a surf beach, you may need to have your stainless steel grates electropolished.

**Code** 100ARG30

**Range** 100

**Grate Style** AR

**Category** Modular Kits

**Channel Material** uPVC

**Steel Grade** 316

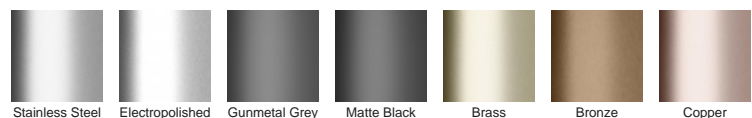


Grates longer than 1500mm supplied in sections. Tile Inserts longer than 1200mm supplied in sections. Channels over 3000mm supplied in sections with joiner. +/-2mm tolerance on dimensions.

### SPECIFICATIONS + DIMENSIONS

<b>Channel Width</b>	106mm												
<b>Channel Depth</b>	32mm												
<b>Length(s)</b>	900mm	1000mm	1200mm	1500mm	1800mm	1900mm	2000mm	2100mm	2200mm	2400mm	2500mm	2700mm	3000mm
<b>Outlet Size</b>	DN40, DN50, DN80, DN100												

### STORMTECH COLOUR FINISHES



Electroplate finishes subject to natural variation with time and local environment. Factors such as pools/surf beaches may require electropolishing. Contact us for suitability.

### PRODUCT APPLICATIONS

- |                             |                            |
|-----------------------------|----------------------------|
| Bathroom Drainage           | Hospitality Drainage       |
| Aged / Health Care Drainage | Paved Area Drainage        |
| Balcony Drainage            | Shower Drainage            |
| Commercial Drainage         | Multi-Residential Drainage |
| Courtyard / Patio Drainage  | Special Needs Drainage     |
| Pool and Spa Area Drainage  | Threshold Drainage         |

Copyright © Stormtech Pty Ltd. Patent 733361. Drawings not to scale, please use dimensions shown. Downloaded 15/04/2026 (please check for updates)



Visit [stormtech.com.au](http://stormtech.com.au)  
for tools + inspiration.

Phone **1300 653 403**

Email [info@stormtech.com.au](mailto:info@stormtech.com.au)