

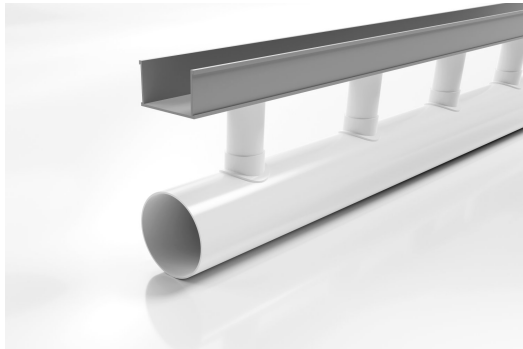


ARCHITECTURAL  
GRATES + DRAINS



# 65G90

## Linear Drain



Developed for high capacity drainage needs, providing flexibility in landscape and pool design.

90mm Drainpipe with 65G UPVC Channel.

A 65mm wide UPVC channel is connected via downpipes at 200mm intervals to sockets in a 90mm drain below.

This allows the channel to be installed level while the drainpipe is given sufficient fall to be self-cleaning.

The Special Assembly is then completed with a stainless steel grate from the AR, TR or PS series.

Please be aware that depending on the installation environment, for a pool installation or close to a surf beach, you may need to have your stainless steel grates electropolished.

This unique drainage system was recognised for its innovation by a DesignMark at the Australian International Design Awards.

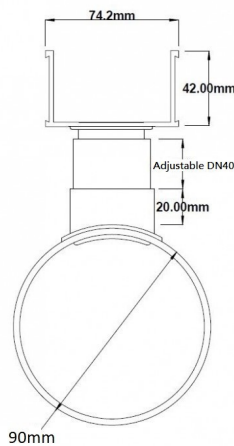
**Please note stainless steel grates to complement this system are separate items**

**Code** 65G90

**Range** Special Assembly

**Category** Modular Kits

**Channel Material** uPVC



Grates longer than 1500mm supplied in sections. Tile Inserts longer than 1200mm supplied in sections. Channels over 3000mm supplied in sections with joiner. +/-2mm tolerance on dimensions.

### SPECIFICATIONS + DIMENSIONS

<b>Channel Width</b>	74mm
<b>Channel Depth</b>	42mm
<b>Length(s)</b>	3000mm
<b>Outlet Size</b>	N/A

### PRODUCT APPLICATIONS

Aged / Health Care Drainage  
Balcony Drainage  
Commercial Drainage  
Courtyard / Patio Drainage  
Driveway Drainage  
Pool and Spa Area Drainage

Paved Area Drainage  
Special Needs Drainage  
Suspended Slab Drainage

Copyright © Stormtech Pty Ltd. Patent 733361. Drawings not to scale, please use dimensions shown. Downloaded 14/04/2026 (please check for updates)



Visit [stormtech.com.au](http://stormtech.com.au)  
for tools + inspiration.

Phone **1300 653 403**

Email [info@stormtech.com.au](mailto:info@stormtech.com.au)