

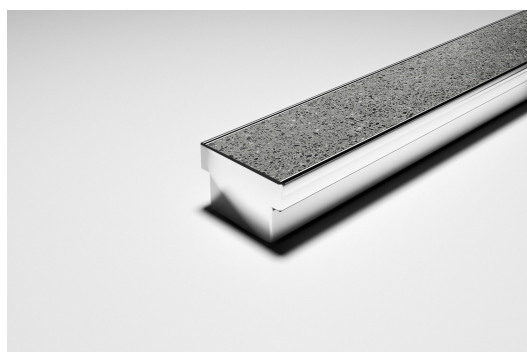


ARCHITECTURAL
GRATES + DRAINS



100Tii50MTL

Linear Drain



The 100Tii50MTL is a tile insert linear drainage system providing a convenient solution for level entry and minimum stepdown requirement of 50mm at hinged door thresholds.

With a channel manufactured from sustainably sourced 316 marine grade stainless steel for durability, hygiene and luxurious visual appeal. This drainage is made to specified length with specified outlet position, featuring a sleek tile insert for seamless integration with tiled floors. Suits tiles up to 10mm thick.

Code 100Tii50MTL

Range 100

Grate Style Ti

Category Made-to-Length

Channel Material Stainless Steel

Steel Grade 316

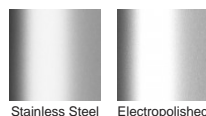
Please be aware that for a pool installation or installation environment close to a surf beach, you may need to have your stainless steel insert & channel electropolished.

Refer to AS3500 for outlet pipe sizes specific to your installation

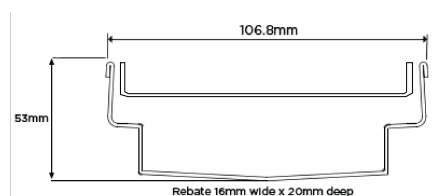
SPECIFICATIONS + DIMENSIONS

Channel Width	107mm
Channel Depth	53mm
Length(s)	As Required
Outlet Size	DN40, DN50, DN65, DN80

STORMTECH COLOUR FINISHES



Electroplate finishes subject to natural variation with time and local environment. Factors such as pools/surf beaches may require electropolishing. Contact us for suitability.



Grates longer than 1500mm supplied in sections. Tile Inserts longer than 1200mm supplied in sections. Channels over 3000mm supplied in sections with joiner. +/-2mm tolerance on dimensions.

PRODUCT APPLICATIONS

- Bathroom Drainage
- Aged / Health Care Drainage
- Balcony Drainage
- Courtyard / Patio Drainage
- Paved Area Drainage
- Shower Drainage
- Special Needs Drainage
- Threshold Drainage



Copyright © Stormtech Pty Ltd. Patent 733361. Drawings not to scale, please use dimensions shown. Downloaded 13/04/2026 (please check for updates)

Visit stormtech.com.au
for tools + inspiration.

Phone **1300 653 403**

Email info@stormtech.com.au